

# DELTA D3 LA

FLAGSHIP, POWERED 3-WAY DUAL 8" LINE ARRAY



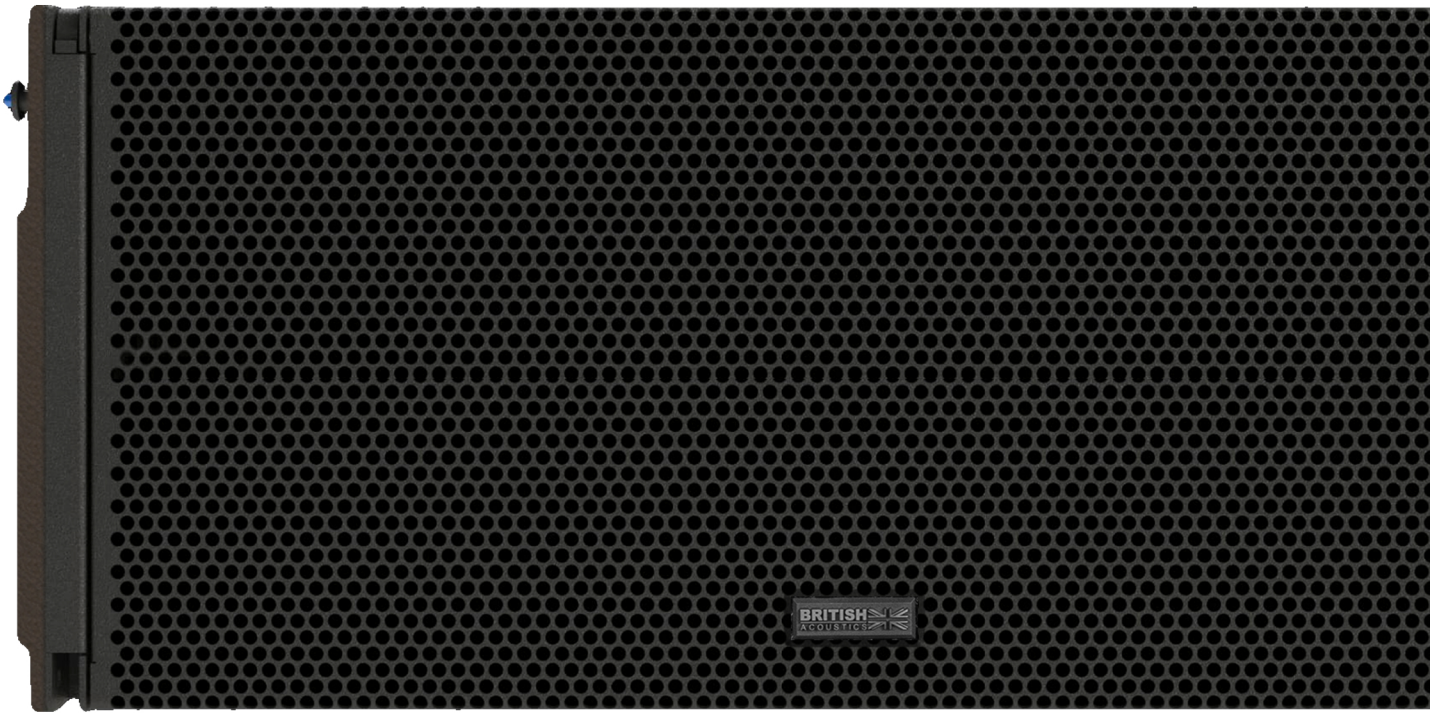
# DELTA D3 LA POWERED LINE ARRAY SYSTEMS

You need Power to CHANGE THE GAME!

The British Acoustics Delta D3 LA is a compact and versatile 3-way dual 8" line array speaker system, designed for small to mid-sized venues. As the younger twin of the Delta D2 LA, the D3 LA delivers the same exceptional clarity and performance while catering to applications requiring a more streamlined, space-conscious solution. With its lightweight design and impressive SPL-to-size ratio, the D3 LA is a powerful option for intimate performances, corporate events, houses of worship, and scalable configurations. Manufactured in Europe with advanced technology, it combines precision engineering and robust construction, ensuring consistent performance and durability in demanding environments.



The D3 LA is equipped with British Acoustics' sophisticated software tools for comprehensive system design and management. The Delta Array Predictor enables precise sound coverage planning tailored to any venue, while the Delta Audio Controller (DAC) offers intuitive, real-time control for seamless integration into complex setups. Tailored for professionals who prioritize portability and flexibility, the Delta D3 LA excels as a standalone system or as part of a larger Delta configuration. Its compact form factor, coupled with its high-performance capabilities, makes it an ideal choice for achieving superior sound in smaller spaces. The Delta D3 LA embodies the hallmark precision and innovation of British Acoustics, providing a reliable, high-quality solution for small to mid-sized sound reinforcement needs.



## ACOUSTICAL SPECIFICATIONS

- Freq. Response (-3 dB) : 65 Hz - 22 kHz
- Freq. Range (-10 dB) : 57Hz - 22 kHz
- H Dispersion : 100° (-6 dB)
- V Dispersion : 10° array dependent
- Crossover : Digital: FIR filter 550 Hz  
Passive : 6.3 KHz
- Max Output : Cont. - 135dB, Peak - 141dB

## SYSTEM SPECIFICATIONS

- Recommended Subwoofers : See Systems Chart for compatible subwoofers
- Recommended System Control : Delta Audio Controller (DAC) & Delta Array Predictor (DAP)

## LF TRANSDUCER

- 813K - 8" Low Frequency Drivers
- Two drivers connected in parallel
- 400W AES Power, 1600W Peak
- 2.5" Duo Copper Voice Coil - Neodymium Magnet
- Malt Cross Cooling Technology
- FEA optimized neodymium magnet circuit
- Fortex™ Weather Resistant Cones

## MF/HF TRANSDUCER

- A45T08 - Ultra-light 8" dual diaphragm coaxial planar wave drivers
- MF : 150W AES Power
- HF : 80W AES Power
- 112 dB Sensitivity
- Improved heat dissipation

## AMPLIFIER & DSP SPECIFICATIONS

- 3000W Class-D Amplifier
- Dual Stage Power Factor Correction
- Exceptional Amplifier Efficiency
- Thermal, short-circuit and overload protections
- 64 bit/96KHz processor, Digital FIR filters
- 32 bit/96KHZ AD/DA converters
- 3" LCD Touch user interface
- Dual Ethercon Connectors to connect with Delta Audio Controller
- AES/EBU XLR In/Out, Analog XLR In/Out
- 16A Neutrik Truecon Power In/Out

## HOUSING

- Marine Birchply Enclosure
- Granular Scratch Free Polyurea Paint
- Perforated Black, Pressed Steel Grills
- Integrated Handles on Either Side

## RIGGING

- 3-Point Easy-Fly™ Rigging Mechanism
- 0-10° Splay Angles
- Tethered Quick-lock Pins
- Max. of 16 units in one hang with the Acc D2 Max

## IP SPECIFICATIONS

- IP 43 - Standard protection against dust & splashes

## AESTHETIC SPECIFICATIONS

- British Acoustics Signature Umber Brown Tone
- Non Reflective, Matte Black Grills
- Available in a RAL code of your choice (24 nos, minimum)

## OPERATING PARAMETERS

- Operating positions: Flowing or Ground stacked with the correct Array Frame or Accessory
- Maximum permitted ambient temperature (Ta max) 55° C (124° F)
- Minimum permitted ambient temperature (Ta min): -2° C (28.4° F)

## OPTIONAL ACCESSORIES

- See system chart for the System Accessories

## SIZE

- Product : 254 x 600 x 480 mm (H x W x D)
- Product : 10 x 23.6 x 18.8 inch (H x W x D)
- Packed individually

## WEIGHT

- Net : 27 Kgs
- Net : 59.5 Lbs

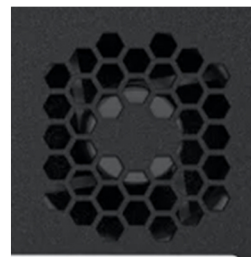
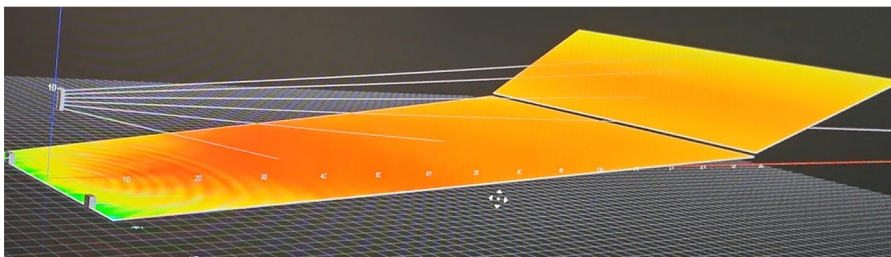
## SHIPPING INFORMATION

- Carton Size  
329 x 675 x 555 mm (H x W x D)  
12.9 x 26.5 x 21.8 inch (H x W x D)
- Gross Weight : 28.35 Kgs / 62.50 Lbs
- Packed : Individually

## PRODUCT INFORMATION

- Model No : Delta D3 LA
- Series X
- Tags : Line Array, Powered, Flagship, High SPL

BA & British Acoustics are registered trademarks in the UK and other regions worldwide  
Safe Installation & Rigging Practices : Installation must be by authorized personnel, following safety and rigging standards to avoid liability.  
\*Product specifications and design may change due to raw material variations or the addition of new features and technologies for improved performance and reliability.  
\*SPL Calculated @ 1m, Free Field with Pink Noise - Crest Factor 4





One Basecamp, 49 Jamaica Street, Liverpool, L10AH, Great Britain.  
Email - [info@britishacoustics.com](mailto:info@britishacoustics.com) | Tel - +44 (0) 151 515 0170  
[www.britishacoustics.com](http://www.britishacoustics.com)