

DELTA K28 S

POWERED DUAL 18" SUBWOOFER



 **BA**

DELTA K28 S POWERED SUBWOOFER SYSTEMS

You need Power to CHANGE THE GAME!

The British Acoustics Delta K28S is a self-powered dual 18" intelligent subwoofer, designed to provide deep, impactful bass for a wide range of professional audio applications. From live performances and concert tours to high-end installations, the K28S ensures accurate and powerful low-frequency reinforcement with exceptional clarity. Powered by a 3000W continuous (6000W peak) Class-D amplifier, the Delta K28S achieves a frequency response of 29 Hz to 185 Hz and a maximum SPL of 143 dB. It is equipped with dual 18" ultra low excursion drivers featuring 4" voice coils, delivering precise bass performance with minimal distortion and high thermal stability, even under demanding conditions.



The K28S includes an intuitive control interface with options for system gain adjustment, preset selection, polarity inversion, and power management. Dual balanced XLR connectors provide stereo input and link capabilities, ensuring seamless integration into complex audio setups. The subwoofer's universal power supply (100-240 VAC, 50-60 Hz) makes it adaptable for use in diverse environments. Constructed from durable marine birchwood and finished with a powder-coated grill, the K28S is built for longevity and reliability. The cabinet's reinforced design minimizes resonance, maintaining sound integrity even at high SPL levels. The Delta K28S combines advanced engineering, powerful performance, and user-friendly controls, making it an essential addition to professional audio systems demanding precision and powerful low-end performance.



ACOUSTICAL SPECIFICATIONS

- Freq. Response (-3 dB) : 36 Hz - 185 Hz
- Freq. Range (-10 dB) : 29 Hz - 200 Hz
- Omnidirectional Coverage
- Cardioid preset available
- Crossover : 60-100 Hz, active
- Max Output : Cont. : 137dB, Peak : 143dB

SYSTEM SPECIFICATIONS

- Recommended System Control : Delta Audio Controller (DAC) & Delta Array Predictor (DAP)

LF TRANSDUCER

- 1800-68A- 18" Low Frequency Long Excursion Driver
- 1200W, 4800W Peak
- Two Driver Connected in parallel
- 4" Copper Voice Coil - Ferrite Magnet
- Minimal Power Compression with optimised air-paths
- Aluminum Demodulation Ring for reduced distortion

AMPLIFIER & DSP SPECIFICATIONS

- 6000W Class-D Amplifier
- Exceptional Amplifier Efficiency
- Dual Stage Power Factor Correction
- Thermal, short-circuit and overload protections
- 64 bit/96kHz processor, Digital FIR filters
- 32 bit/96kHz AD/DA converters
- Dual Ethercon Connectors to connect with Delta Audio Controller
- 16A Neutrik Truecon Power In/Out

HOUSING

- Marine Birchply Enclosure
- Granular Scratch Free Polyurea Paint
- Perforated Black, Pressed Steel Grills
- Integrated Handles on Either Side

IP SPECIFICATIONS

- IP 43 - Standard protection against dust & splashes

AESTHETIC SPECIFICATIONS

- British Acoustics Signature Umber Brown Tone
- Non Reflective, Matte Black Grills
- Available in a RAL code of your choice (24 nos, minimum)

OPERATING PARAMETERS

- Operating positions: On Ground, stackable
- Maximum permitted ambient temperature (Ta max) 55° C (124° F)
- Minimum permitted ambient temperature (Ta min): -2° C (28.4° F)

OPTIONAL ACCESSORIES

- See system chart for the System Accessories

SIZE

- Product: 533 x 1295 x 686 mm (H x W x D)
- Product: 21 x 51 x 27 inch (H x W x D)
- Packed individually

WEIGHT

- Net : 79 Kgs
- Net : 174 Lbs

SHIPPING INFORMATION

- Carton Size
628 x 1371 x 761 mm (H x W x D)
24.7 x 53.9 x 30 inch (H x W x D)
- Gross Weight : 84 Kgs / 185.2 Lbs
- Packed : Individually

PRODUCT INFORMATION

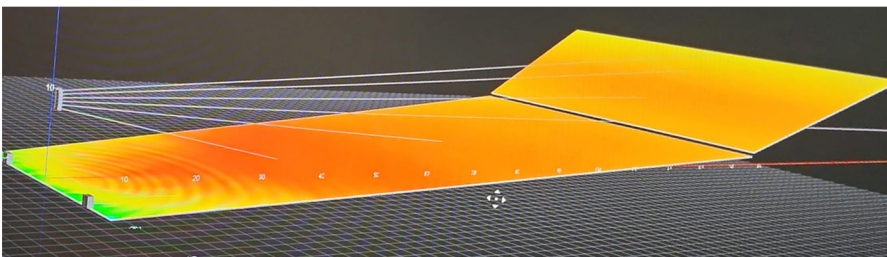
- Model No : Delta K28 S
- Series X
- Tags : Line Subwoofer, Self-Powered, Flagship, High SPL

BA & British Acoustics are registered trademarks in the UK and other regions worldwide

Safe Installation & Rigging Practices : Installation must be by authorized personnel, following safety and rigging standards to avoid liability.

*Product specifications and design may change due to raw material variations or the addition of new features and technologies for improved performance and reliability.

*SPL Calculated @ 1m, Free Field with Pink Noise - Crest Factor 4





One Basecamp, 49 Jamaica Street, Liverpool, L10AH, Great Britain.
Email - info@britishacoustics.com | Tel - +44 (0) 151 515 0170
www.britishacoustics.com