

DELTA D21 FS

FLAGSHIP, POWERED 21" FLYING SUBWOOFER



 **BA**

DELTA D21 FS POWERED FLYING SUBWOOFER

You need Power to CHANGE THE GAME!

The British Acoustics Delta D21 FS is a flagship self-powered 21" flying subwoofer, meticulously engineered to deliver robust low-frequency performance for professional audio applications. Designed for concert tours, live events, and fixed installations, it ensures precise and powerful bass reproduction. Equipped with a 4000W Class-D amplifier, the Delta D21 FS provides consistent high-output performance, achieving a peak SPL of 137 dB. Its advanced 21" LF driver features a 4" Quattro in/out copper voice coil and a treated waterproof cone, ensuring durability and minimal distortion in demanding environments. The subwoofer includes a 4-point secure fly rigging system, facilitating seamless integration into line array setups and ease of deployment. For advanced control and



optimization, it integrates with the Delta Audio Controller (DAC), allowing precise tuning and real-time monitoring. Additionally, the Delta Array Predictor supports the design of subwoofer beams and cardioid stacks, offering flexibility in system configuration. Constructed with a marine birchwood cabinet and a powder-coated durable grill, the Delta D21 FS is built for durability and minimal resonance, ensuring consistent sound performance even at high SPL levels. Its signature brown finish and front power and signal panel with presets enhance usability and aesthetic appeal. Combining advanced technology, powerful amplification, and superior design, the Delta D21 FS sets a new standard for flying subwoofers in professional audio.



ACOUSTICAL SPECIFICATIONS

- Freq. Response (-3 dB) : 30 Hz - 125 Hz
- Freq. Range (-10 dB) : 25 Hz - 125 Hz
- Omnidirectional Coverage
- Cardioid preset available
- Crossover : 60 Hz -100 Hz active
- Max Output : Cont. - 131dB, Peak - 137dB

SYSTEM SPECIFICATIONS

- Recommended System Control : Delta Audio Controller (DAC) & Delta Array Predictor (DAP)

LF TRANSDUCER

- 212K - 21" Low Frequency Drivers
- 1600W AES Power, 6400W Peak
- 4" Duo Copper Voice Coil - Neodymium Magnet
- Malt Cross Cooling Technology
- FEA optimized neodymium magnet circuit
- Fortex™ Weather Resistant Cones

AMPLIFIER & DSP SPECIFICATIONS

- 3000W Class-D Amplifier
- Dual Stage Power Factor Correction
- Exceptional Amplifier Efficiency
- Thermal, short-circuit and overload protections
- 64 bit/96KHz processor, Digital FIR filters
- 32 bit/96KHZ AD/DA converters
- 3" LCD Touch user interface
- Dual Ethercon Connectors to connect with Delta Audio Controller
- AES/EBU XLR In/Out, Analog XLR In/Out
- 16A Neutrik Truecon Power In/Out

HOUSING

- Marine Birchply Enclosure
- Granular Scratch Free Polyurea Paint
- Perforated Black, Pressed Steel Grills
- Integrated Handles on Either Side

RIGGING

- 4-Point Easy-Fly™ Rigging Mechanism
- Tethered Quick-lock Pins
- Max. of 16 units in one hang with the Acc D2 Max
- Can be flown or stacked with the Delta D2 LA

IP SPECIFICATIONS

- IP 43 - Standard protection against dust & splashes

AESTHETIC SPECIFICATIONS

- British Acoustics Signature Umber Brown Tone
- Non Reflective, Matte Black Grills
- Available in a RAL code of your choice (24 nos, minimum)

OPERATING PARAMETERS

- Operating positions : On Ground, stackable or flown with correct accessories
- Maximum permitted ambient temperature (Ta max) 55° C (124° F)
- Minimum permitted ambient temperature (Ta min): -2° C (28.4° F)

OPTIONAL ACCESSORIES

- See system chart for the System Accessories

SIZE

- Product : 609 x 800 x 777 mm (H x W x D)
- Product : 24 x 31.5 x 30.6 inch (H x W x D)
- Packed individually

WEIGHT

- Net : 64 Kgs
- Net : 141.1 Lbs

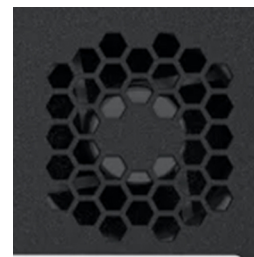
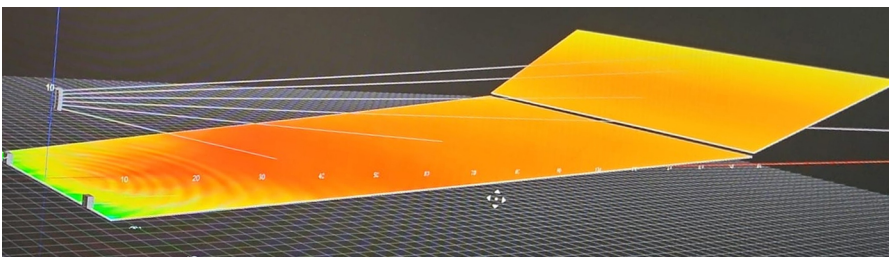
SHIPPING INFORMATION

- Carton Size
684 x 875 x 852 mm (H x W x D)
26.98 x 34.4 x 33.5 inch (H x W x D)
- Gross Weight : 67.2 Kgs / 148.24 Lbs
- Packed : Individually

PRODUCT INFORMATION

- Model No : Delta D21 FS
- Series X
- Tags : Subwoofer, Self-Powered, Flagship, High SPL

BA & British Acoustics are registered trademarks in the UK and other regions worldwide
 Safe Installation & Rigging Practices - Installation must be by authorized personnel, following safety and rigging standards to avoid liability.
 *Product specifications and design may change due to raw material variations or the addition of new features and technologies for improved performance and reliability.
 *SPL Calculated @ 1m, Free Field with Pink Noise - Crest Factor 4





One Basecamp, 49 Jamaica Street, Liverpool, L10AH, Great Britain.
Email - info@britishacoustics.com | Tel - +44 (0) 151 515 0170
www.britishacoustics.com