

# DELTA D2 LA

FLAGSHIP, POWERED 3-WAY DUAL 12" LINE ARRAY



 **BA**

# DELTA D2 LA POWERED LINE ARRAY SYSTEMS

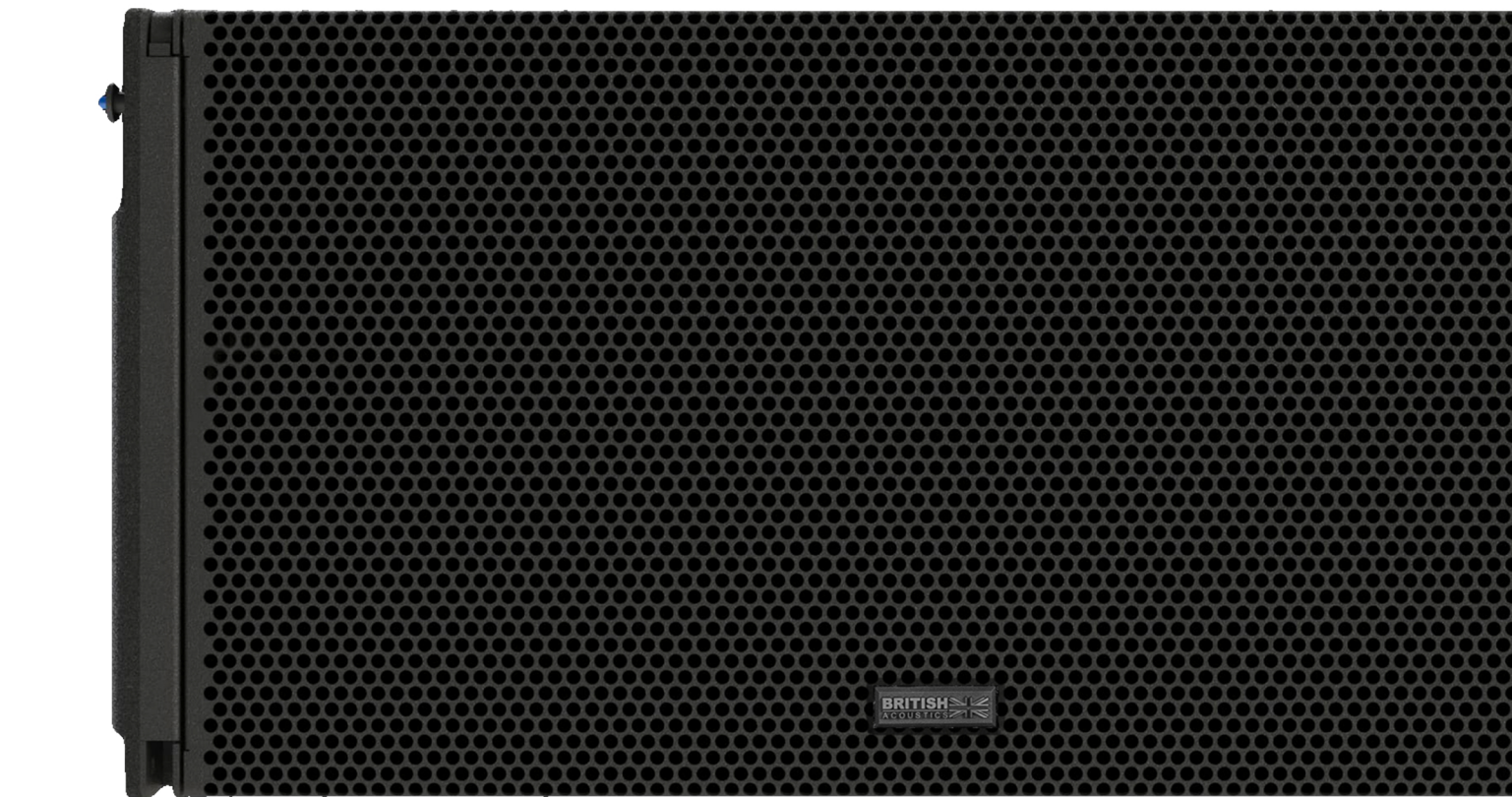
You need Power to CHANGE THE GAME!

The British Acoustics Delta D2 LA is a compact, high-performance 3-way dual 12" line array speaker system, designed for versatility across a wide range of professional audio applications. Whether deployed for live concerts, touring events, corporate functions, or fixed installations, the D2 LA delivers consistent, accurate sound reproduction with impressive power and clarity. The system's compact dimensions are an advantage, offering an exceptional SPL-to-size ratio that ensures powerful performance without occupying excessive space. Manufactured in Europe with cutting-edge technology, the Delta D2 LA prioritizes precision and durability, ensuring reliable operation in demanding environments.



The system incorporates advanced software tools for precise configuration and control. The Delta Array Predictor enables accurate system design and sound coverage simulation, ensuring optimal performance tailored to the venue. The Delta Audio Controller (DAC) provides robust, real-time system control, enhancing operational efficiency and adaptability in complex audio setups. Engineered with a focus on accuracy and ease of use, the Delta D2 LA combines advanced features with a durable, lightweight design. Its compact form factor, paired with its high SPL capabilities, makes it an efficient and powerful solution for modern audio professionals. The Delta D2 LA embodies the hallmark precision and innovation of British Acoustics, providing a reliable, high-quality solution for small to mid-sized sound reinforcement needs.





## ACOUSTICAL SPECIFICATIONS

- Freq. Response (-3 dB) : 50 Hz - 20 kHz
- Freq. Range (-10 dB) : 46Hz - 20 kHz
- H Dispersion : 100° (-6 dB)
- V Dispersion : 10° array dependent
- Crossover : Digital : FIR filter 550 Hz  
Passive : 6.3 KHz
- Max Output : Cont. - 142dB, Peak - 148dB

## SYSTEM SPECIFICATIONS

- Recommended Subwoofers : See Systems Chart for compatible subwoofers
- Recommended System Control : Delta Audio Controller (DAC) & Delta Array Predictor (DAP)

## LF TRANSDUCER

- 12" Low Frequency Drivers
- Two drivers connected in parallel
- 700W AES Power, 2800W Peak
- 4" Duo Copper Voice Coil - Neodymium Magnet
- Malt Cross Cooling Technology
- FEA optimized neodymium magnet circuit
- Fortex™ Weather Resistant Cones

## MF/HF TRANSDUCER

- 6.5" dual diaphragm coaxial planar wave drivers.
- Two drivers connected in parallel
- MF : 150W AES Power, 1000W Peak
- HF : 80W AES Power, 320W Peak
- 112 dB Sensitivity
- Improved heat dissipation

## AMPLIFIER & DSP SPECIFICATIONS

- 6000W Class-D Amplifier
- Exceptional Amplifier Efficiency
- Dual Stage Power Factor Correction
- Thermal, short-circuit and overload protections
- 64 bit/96KHz processor, Digital FIR filters
- 32 bit/96KHZ AD/DA converters
- 3" LCD Touch user interface
- Dual Ethercon Connectors to connect with Delta Audio Controller
- AES/EBU XLR In/Out, Analog XLR In/Out
- 16A Neutrik Truecon Power In/Out

## HOUSING

- Marine Birchply Enclosure
- Granular Scratch Free Polyurea Paint
- Integrated Handles on Either Side

## RIGGING

- 3-Point Easy-Fly™ Rigging Mechanism
- 0-10° Splay Angles
- Tethered Quick-lock Pins
- Max. of 16 units in one hang with the Acc D2 Max
- Can be flown or stacked over the Delta D21 FS

## IP SPECIFICATIONS

- IP 43 - Standard protection against dust & splashes

## AESTHETIC SPECIFICATIONS

- British Acoustics Signature Umber Brown Tone
- Non Reflective, Matte Black Grills
- Available in a RAL code of your choice (24 nos, minimum)

## OPERATING PARAMETERS

- Operating positions: Flowing or Ground stacked with the correct Array Frame or Accessory
- Maximum permitted ambient temperature (Ta max) 55° C (124° F)

- Minimum permitted ambient temperature (Ta min) : -2° C (28.4° F)

## OPTIONAL ACCESSORIES

- See system chart for the System Accessories

## SIZE

- Product : 384 x 800 x 480 mm (H x W x D)
- Product : 15.1 x 31.5 x 19 inch (H x W x D)
- Packed individually

## WEIGHT

- Net : 47 Kgs
- Net : 103.68 Lbs

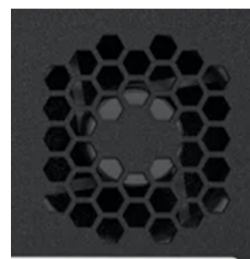
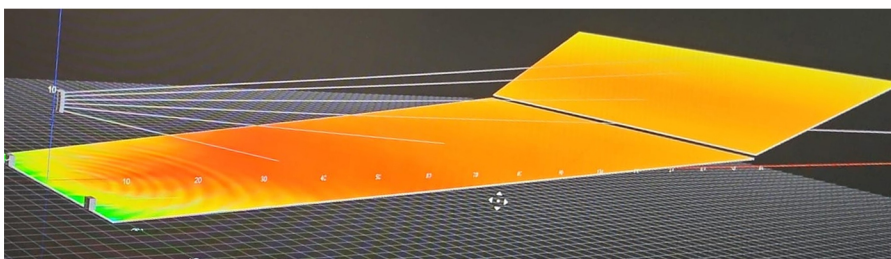
## SHIPPING INFORMATION

- Carton Size  
459 x 875 x 555 mm (H x W x D)  
18.07 x 34.4 x 22.7 inch (H x W x D)
- Gross Weight : 49.35 Kgs / 108.86 Lbs
- Packed : Individually

## PRODUCT INFORMATION

- Model No : Delta D2 LA
- Series X
- Tags : Line Array, Self-Powered, Flagship, High SPL

BA & British Acoustics are registered trademarks in the UK and other regions worldwide.  
Safe Installation & Rigging Practices : Installation must be by authorized personnel, following safety and rigging standards to avoid liability.  
\*Product specifications and design may change due to raw material variations or the addition of new features and technologies for improved performance and reliability.  
†SPL Calculated @ 1m, Free Field with Pink Noise - Crest Factor 4





One Basecamp, 49 Jamaica Street, Liverpool, L10AH, Great Britain.  
Email - [info@britishacoustics.com](mailto:info@britishacoustics.com) | Tel - +44 (0) 151 515 0170  
[www.britishacoustics.com](http://www.britishacoustics.com)