

DELTA K40 LA

POWERED DUAL 10" LINE ARRAY



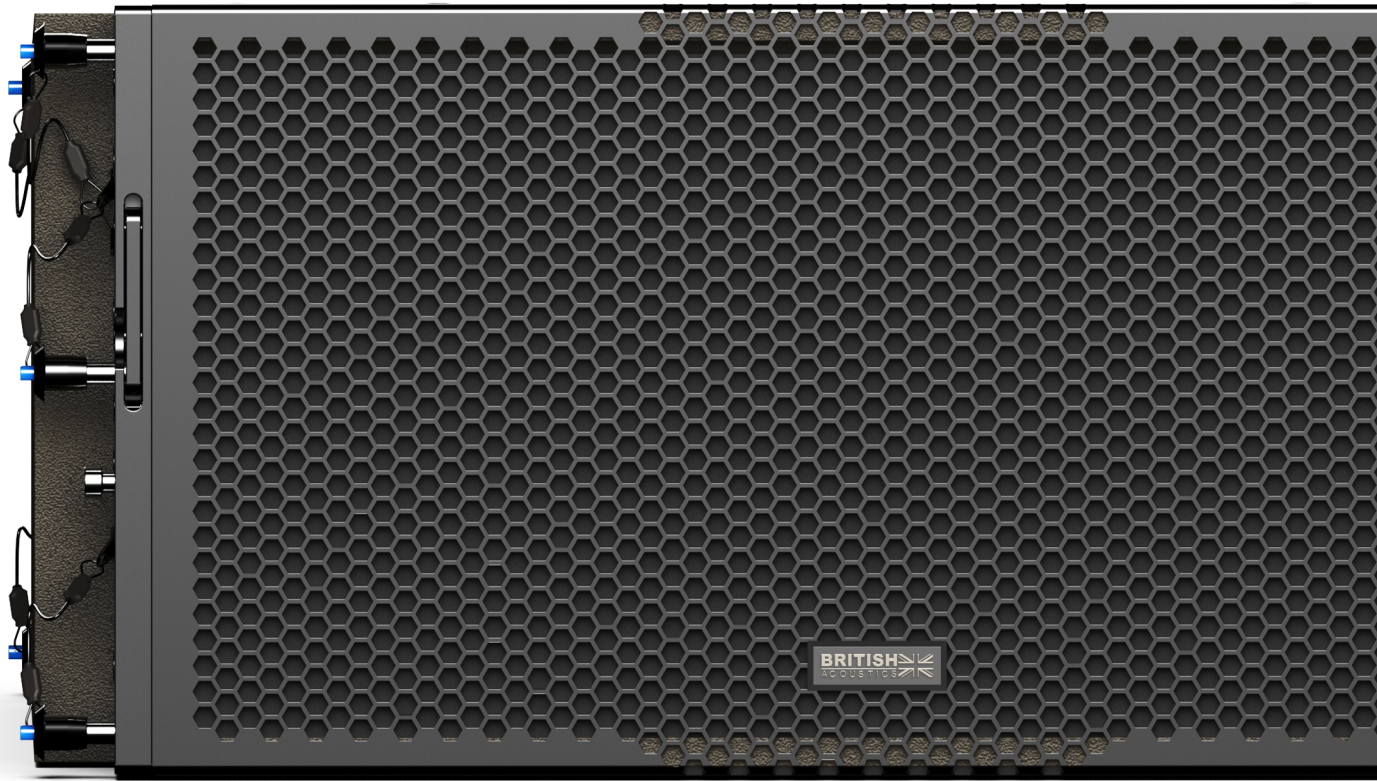
DELTA K40 LA POWERED LINE ARRAY SYSTEMS

You need Power to CHANGE THE GAME!

The British Acoustics Delta K40 LA is a compact and versatile self-powered dual 10" line array, designed for professional audio applications where high performance and ease of use are paramount. Its intelligent features and robust construction make it ideal for touring, live performances, and fixed installations. With its compact design, the K40 LA is easy to set up and integrates seamlessly into any venue, offering a best-in-class size-to-SPL ratio for powerful, room-filling sound without taking up excessive space. Equipped with 3000W of top-of-the-line Class-D amplification, the K40 LA delivers exceptional clarity and output while maintaining high energy efficiency.



Its built-in DSP allows plug-and-play operation, making it user-friendly and quick to deploy. For larger systems, the K40 LA can be controlled via the Delta Audio Controller, providing advanced system configuration and real-time monitoring. The cabinet is constructed from premium Baltic birchwood, ensuring durability and acoustic precision. This robust construction minimizes resonance, ensuring consistent and accurate sound reproduction even at high SPL levels. Combining compact portability, powerful amplification, and intelligent features, the Delta K40 LA sets a new standard for professional line arrays, delivering exceptional sound quality and reliability in any environment.



ACOUSTICAL SPECIFICATIONS

- Freq. Response (-3 dB) : 54 Hz - 20 kHz
- Freq. Range (-10 dB) : 49Hz - 20 kHz
- H Dispersion : 100° (-6 dB)
- V Dispersion : 10° array dependent
- Crossover : Digital FIR 1.2 kHz
- Max Output : Cont. : 131dB, Peak : 137dB

SYSTEM SPECIFICATIONS

- Recommended Subwoofers : See Systems Chart for compatible subwoofers
- Recommended System Control : Delta Audio Controller (DAC) & Delta Array Predictor (DAP)

LF TRANSDUCER

- 1013 F - 10" Low Frequency Delta Drive 3" VC
- Two drivers connected in series
- 500W , 2000W Peak
- Inside-out Aluminum Voice Coil
- Compliant & controlled spectre-spider
- Enhanced ventilation due to optimized heat paths

HF TRANSDUCER

- HF 1575-1.5" exit high frequency compression

driver

- 100W, 400W Peak
- Precise waveguide maintaining horizontal dispersion upto 18 kHz

AMPLIFIER & DSP SPECIFICATIONS

- 3000W Class-D Amplifier
- Dual Stage Power Factor Correction
- Exceptional Amplifier Efficiency
- Thermal, short-circuit and overload protections
- 64 bit/96kHz processor, Digital FIR filters
- 32 bit/96kHz AD/DA converters
- Dual Ethercon Connectors to connect with Delta Audio Controller
- 16A Neutrik Truecon Power In/Out

HOUSING

- Marine Birchply Enclosure
- Granular Scratch Free Polyurea Paint
- Perforated Black, Pressed Steel Grills
- Integrated Handles on Either Side

RIGGING

- 4-Point Easy-Fly™ Rigging Mechanism
- 0-10° Splay Angles
- Tethered Quick-lock Pins

Max. of 16 units in one hang with the AF 930 LA

- Can be flown or stacked over the Delta K18 FS without the need of an array frame

IP SPECIFICATIONS

- IP 43 - Standard protection against dust & splashes

AESTHETIC SPECIFICATIONS

- British Acoustics Signature Umber Brown Tone
- Non Reflective, Matte Black Grills
- Available in a RAL code of your choice (24 nos, minimum)

OPERATING PARAMETERS

- Operating positions: Flown or Ground stacked with the correct Array Frame or Accessory
- Maximum permitted ambient temperature (Ta max) 55° C (124° F)
- Minimum permitted ambient temperature (Ta min): -2° C (28.4° F)

OPTIONAL ACCESSORIES

- See system chart for the System Accessories

SIZE

- Product: 292 x 648 x 483 mm (H x W x D)
- Product: 11.5 x 25.5 x 19 inch (H x W x D)
- Packed individually

WEIGHT

- Net : 32 Kgs
- Net : 70.56 Lbs

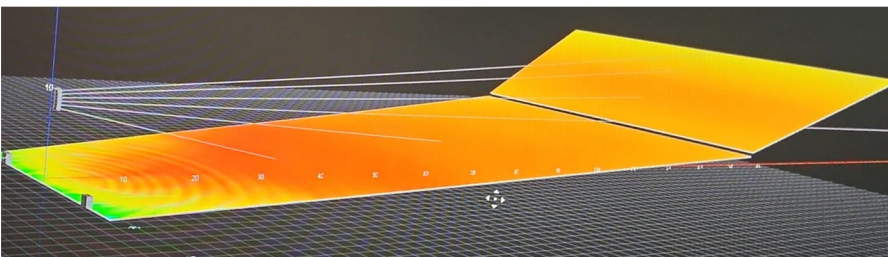
SHIPPING INFORMATION

- Carton Size
367 x 723 x 558 mm (H x W x D)
14.4 x 28.4 x 21.9 inch (H x W x D)
- Gross Weight : 37 Kgs / 81.58 Lbs
- Packed : individually

PRODUCT INFORMATION

- Model No : Delta K40 LA
- Series X
- Tags : Line Array, Self-Powered, Flagship, High SPL

BA & British Acoustics are registered trademarks in the UK and other regions worldwide.
Safe Installation & Rigging Practices : Installation must be by authorized personnel, following safety and rigging standards to avoid liability.
*Product specifications and design may change due to raw material variations or the addition of new features and technologies for improved performance and reliability.
*SPL Calculated @ 1m, Free Field with Pink Noise - Crest Factor 4





One Basecamp, 49 Jamaica Street, Liverpool, L10AH, Great Britain.
Email - info@britishacoustics.com | Tel - +44 (0) 151 515 0170
www.britishacoustics.com