

DELTA K18 FS

POWERED 18" FLYING SUBWOOFER



 **BA**

DELTA K18 FS POWERED FLYING SUBWOOFER

You need Power to CHANGE THE GAME!

The British Acoustics Delta K18 FS is a high-performance self-powered 18" flying subwoofer, designed for powerful and precise low-frequency reinforcement in professional audio applications. Featuring an 18" neodymium magnet woofer housed in a front-loaded, vented enclosure, the K18 FS ensures exceptional bass performance with clarity and control. Engineered for seamless integration, the Delta K18 FS pairs perfectly with the Delta K40 Line Array, enabling the creation of robust array configurations. For ground-stacked setups, it includes a top-mounted 20mm threaded pole socket, allowing versatile deployment options with minimal effort. Powered by a 3000W Class-D amplifier, the K18 FS delivers consistent output with a frequency range of 31 Hz to 22 kHz.



Its 4" Duo Copper Voice Coil and Malt Cross Cooling Technology provide thermal stability and durability, ensuring peak performance even in demanding environments. The subwoofer is equipped with Delta Audio Controller and Delta Array Predictor, offering precise control and advanced system configuration capabilities such as cardioid arrays and subwoofer beams. Its automatic voltage selection ensures adaptability across global power standards, while the sloped input plate enhances weather resistance. Built with a robust birch ply enclosure, granular scratch-free paint, and Fortex™ weather-resistant cones, the Delta K18 FS is designed for reliability and durability. Finished in British Acoustics' signature brown tone, it is a flagship choice for professionals who demand powerful, versatile, and weather-ready subwoofer performance.



ACOUSTICAL SPECIFICATIONS

- Freq. Response (-3 dB) : 40 Hz - 400 Hz
- Freq. Range (-10 dB) : 36 Hz - 400 Hz
- Omnidirectional Coverage
- Cardioid preset available
- Crossover : 60 Hz - 100 Hz active
- Max Output : Cont. - 129dB, Peak - 135dB

SYSTEM SPECIFICATIONS

- Recommended System Control : Delta Audio Controller (DAC) & Delta Array Predictor (DAP)

LF TRANSDUCER

- D18 - 100 18" Low frequency driver
- 1000W, 4000W Peak
- 4" Inside-out wound VC
- Optimised Cooling system
- Aluminum Demodulating Ring
- Double Silicone Spider

AMPLIFIER & DSP SPECIFICATIONS

- 3000W Class-D Amplifier
- Dual Stage Power Factor Correction
- Exceptional Amplifier Efficiency
- Thermal, short-circuit and overload protections
- 64 bit/96kHz processor, Digital FIR filters
- 32 bit/96kHz AD/DA converters
- 3" LCD Touch user interface
- Dual Ethercon Connectors to connect with Delta Audio Controller
- AES/EBU XLR In/Out, Analog XLR In/Out
- 16A Neutrik Truecon Power In/Out

HOUSING

- Marine Birchply Enclosure
- Granular Scratch Free Polyurea Paint
- Perforated Black, Pressed Steel Grills
- Integrated Handles on Either Side

IP SPECIFICATIONS

- IP 43 - Standard protection against dust & splashes

AESTHETIC SPECIFICATIONS

- British Acoustics Signature UMBER BROWN Tone
- Non Reflective, Matte Black Grills
- Available in a RAL code of your choice (24 nos, minimum)

OPERATING PARAMETERS

- Operating positions: On Ground, stackable
- Maximum permitted ambient temperature (Ta max) 55° C (124° F)
- Minimum permitted ambient temperature (Ta min): -2° C (28.4° F)

OPTIONAL ACCESSORIES

- See system chart for the System Accessories

SIZE

- Product: 508 x 597 x 749 mm (H x W x D)
- Product: 20 x 23.5 x 29.5 inch (H x W x D)
- Packed individually

WEIGHT

- Net : 59 Kgs
- Net : 130 Lbs

SHIPPING INFORMATION

- Corrugated 7 ply carton with 4" PE insulated packing
- No of Units in Master Cartoon : 1
- Carton Size 2413 x 12501 x 2654 mm (H x W x D) 95 x 98.5 x 104.5 inch (H x W x D)
- Gross Weight : 61 Kgs / 134 Lbs
- Packed : individually

PRODUCT INFORMATION

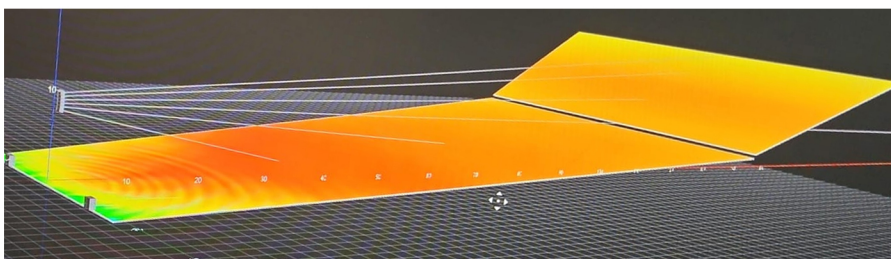
- Model No : Delta K18 FS
- Series X
- Tags : Subwoofer, Self-Powered, Flagship, High SPL

BA & British Acoustics are registered trademarks in the UK and other regions worldwide

Safe Installation & Rigging Practices - Installation must be by authorized personnel, following safety and rigging standards to avoid liability.

*Product specifications and design may change due to raw material variations or the addition of new features and technologies for improved performance and reliability.

*SPL Calculated @ 1m, Free Field with Pink Noise - Crest Factor 4





One Basecamp, 49 Jamaica Street, Liverpool, L10AH, Great Britain.
Email - info@britishacoustics.com | Tel - +44 (0) 151 515 0170
www.britishacoustics.com