

# DELTA K15 X

3000W SELF POWERED 15" CO-AXIAL WEDGE MONITOR

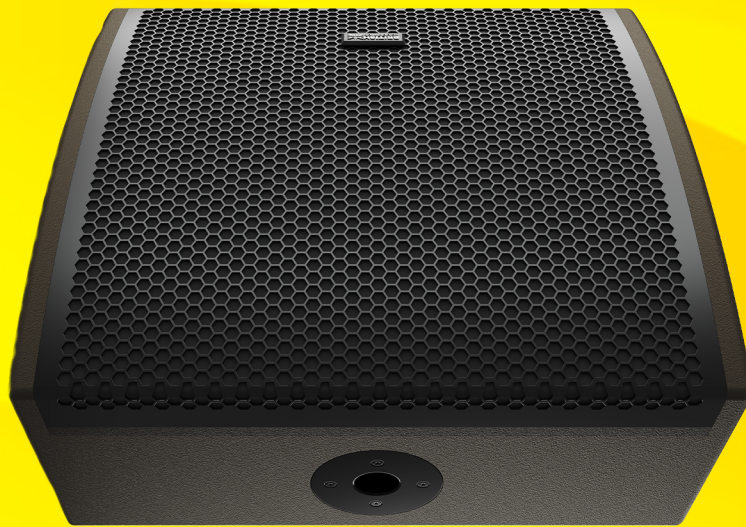


 **BA**

# DELTA K15 X POWERED WEDGE MONITOR

You need Power to CHANGE THE GAME!

The British Acoustics Delta K15 X is a flagship 15" self-powered coaxial wedge monitor, engineered to meet the demands of professional audio environments. Combining compact design, exceptional clarity, and advanced performance, it sets a new benchmark in stage monitoring. Equipped with a 3000W Class-D amplifier, the K15 X offers precise and linear sound reproduction with a full-range frequency response of 50 Hz to 22 kHz. Its 15" coaxial neodymium woofer and 3.5" Duo Copper Voice Coil deliver deep, accurate voicing, detailed midrange, and exceptional high-frequency clarity. The monitor's flat amplitude and phase response ensures consistent, natural sound across its 60° dispersion, making it ideal for demanding touring and theatre applications.



The K15 X's compact, low-profile design minimizes stage clutter, ensuring a discreet presence without sacrificing acoustic output. Its durable birch ply enclosure, Fortex™ weather-resistant cones, and sloped input plate enhance reliability and weather resistance, making it suitable for both indoor and outdoor use. For advanced configurations, the monitor integrates with Delta Audio Controller and Delta Array Predictor, offering precise control and seamless system integration. The addition of DSP-based limiters ensures thermal and mechanical protection for consistent performance. With its combination of power, precision, and versatility, the Delta K15 X redefines stage monitoring, offering unparalleled performance for professionals seeking clarity and control on stage.



## ACOUSTICAL SPECIFICATIONS

- Freq. Response (-3 dB) : 50 Hz - 20 kHz
- Freq. Range (-10 dB) : 50Hz - 22 kHz
- H Dispersion : 100° (- 6 dB)
- V Dispersion : 60° (- 6 dB)
- Crossover : 900 Hz
- Max Output : Cont. - 133dB, Peak - 139dB

## SYSTEM SPECIFICATIONS

- Recommended System Control : Delta Audio Controller (DAC) & Delta Array Predictor (DAP)

## CO-AXIAL TRANSDUCER

- ARD-CX-15-76- 15" Coaxial Driver with 1.4" Compression Driver
- 500W AES, 2000W Peak
- 3" Voice Coil - Ferrite Magnet
- AuraTense Suspension for an optimised compliant restoring force
- Engineered Demodulation Circuit to minimize magnetic flux and lower distortion
- HF : 3" Voice Coil - Ferrite
- 100W AES, 400W Peak

- Mounted behind the asymmetrical aura max waveguide that ensures minimal resonance across a precise coverage pattern
- Co-axial configuration allows for maximum coherence by reducing phase imbalances

## AMPLIFIER & DSP SPECIFICATIONS

- 3000W Class-D Amplifier
- Dual Stage Power Factor Correction
- Exceptional Amplifier Efficiency
- Thermal, short-circuit and overload protections
- 64 bit/96kHz processor, Digital FIR filters
- 32 bit/96kHz AD/DA converters
- Dual Ethercon Connectors to connect with Delta Audio Controller
- 16A Neutrik Truecon Power In/Out

## HOUSING

- Birch wood Enclosure
- Granular Scratch Free Polyurea Paint
- Perforated Stainless Steel Grill backed by acoustically transparent foam over a stainless steel mesh
- M10 Flying Inserts
- Rubber feet for use as floor monitor

- Standard 35mm Pole Socket
- Easy Transport Wood Recessed Handles with ABS Grip Mats

## IP SPECIFICATIONS

- IP 43 - Standard protection against dust & splashes

## AESTHETIC SPECIFICATIONS

- British Acoustics Signature Umber Brown Tone
- Non Reflective, Matte Black Grills
- Available in a RAL code of your choice (24 nos, minimum)

## OPERATING PARAMETERS

- Operating positions: To be used as a stage monitor, or vertically deployed over a sub, or on pole mount as an FOH Speaker
- Maximum permitted ambient temperature (Ta max) 55° C (124° F)
- Minimum permitted ambient temperature (Ta min): -9° C (15.8° F)

## OPTIONAL ACCESSORIES

- See system chart for the System Accessories

## SIZE

- Product : 367 x 616 x 562 mm (H x W x D)
- Product : 14.4 x 24 x 22.1 inch (H x W x D)
- Packed individually

## WEIGHT

- Net : 29 Kgs
- Net : 63.9 Lbs

## SHIPPING INFORMATION

- Carton Size  
442 x 691 x 637 mm (H x W x D)  
17.4 x 27.2 x 25.07 inch (H x W x D)
- Gross Weight : 27.3 Kgs / 60.18 Lbs
- Packed : Individually

## PRODUCT INFORMATION

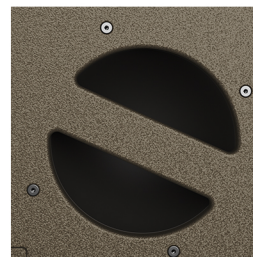
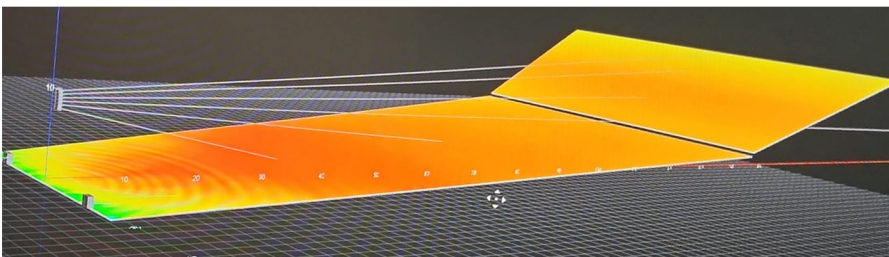
- Model No : Delta K15X
- Series X
- Tags : Self Powered 15" Co-Axial Wedge Monitor

BA & British Acoustics are registered trademarks in the UK and other regions worldwide

Safe Installation & Rigging Practices : Installation must be by authorized personnel, following safety and rigging standards to avoid liability.

\*Product specifications and design may change due to raw material variations or the addition of new features and technologies for improved performance and reliability.

\*SPL Calculated @ 1m, Free Field with Pink Noise - Crest Factor 4





One Basecamp, 49 Jamaica Street, Liverpool, L10AH, Great Britain.  
Email - [info@britishacoustics.com](mailto:info@britishacoustics.com) | Tel - +44 (0) 151 515 0170  
[www.britishacoustics.com](http://www.britishacoustics.com)